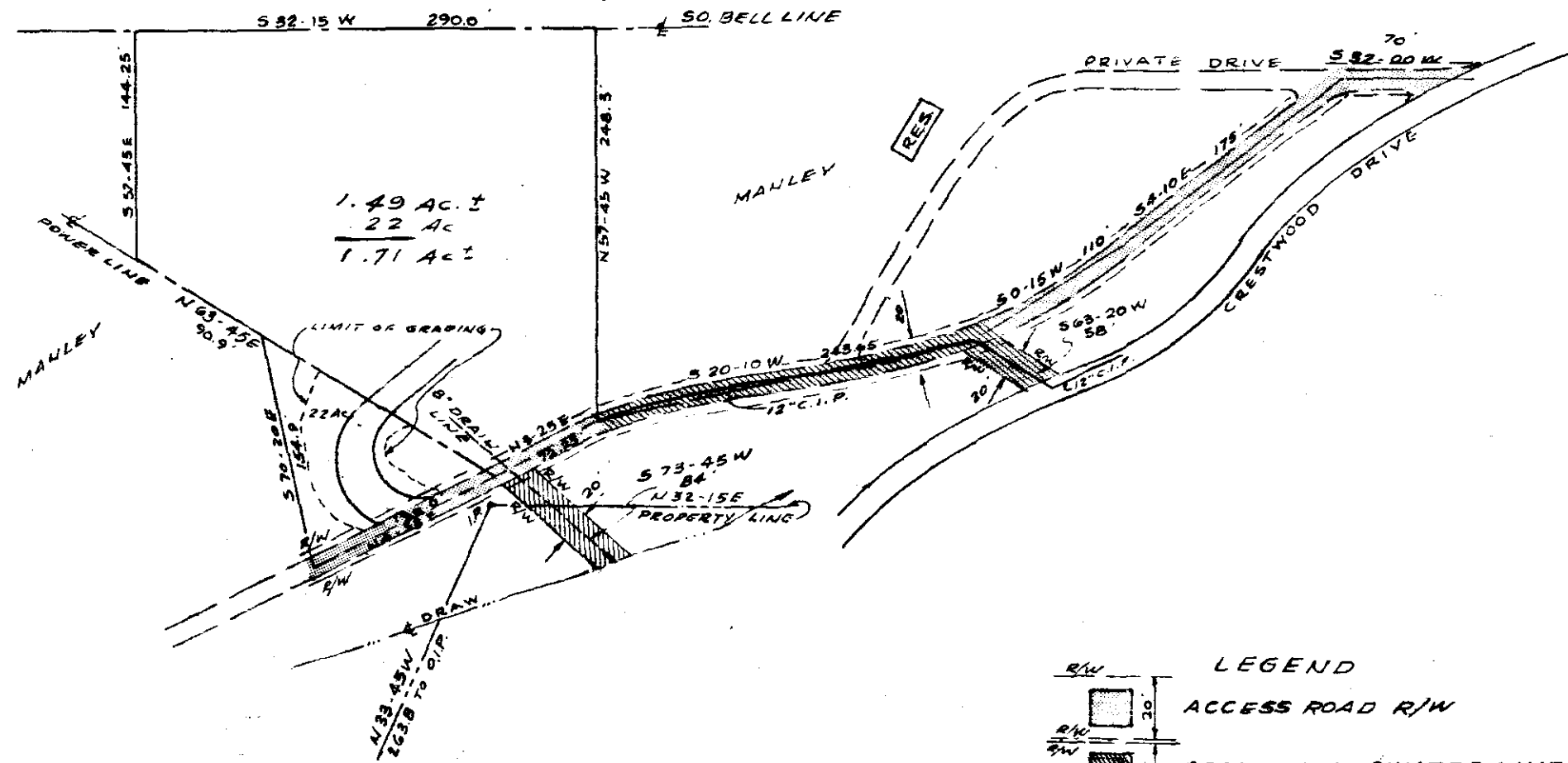
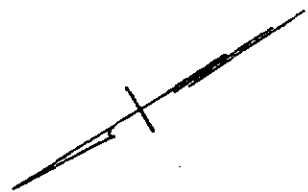


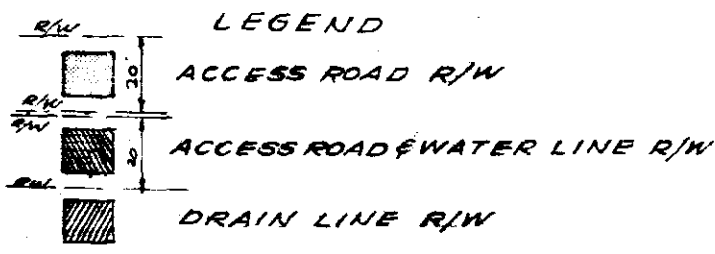
FILED
GREENVILLE CO. S. C.

OCT 9 4 32 PM 1963

OLLIE TAYLOR NORTH
R.M.O.



1.49 AC. ±
22 AC
1.71 AC ±



SURVEY OF PORTION
C. PAUL MANLEY PROPERTY
PARIS MOUNTAIN DISTRICT
NEAR GREENVILLE, S.C.

SCALE 1" = 100'
SEPT, 1962
REV. 9 SEPT. 1963

OCT 9 - 1963 10590

PIEDMONT ENGINEERING SERVICE
GREENVILLE, S.C.

EEE-61

50¢

10590 Filed This 9 day of Oct 19 63
And Recorded in Vol. EEE Page 61 at 4:38 P.M.
S. P. S. [Signature]
Register Mashe Conveyance Greenville County, S. C.